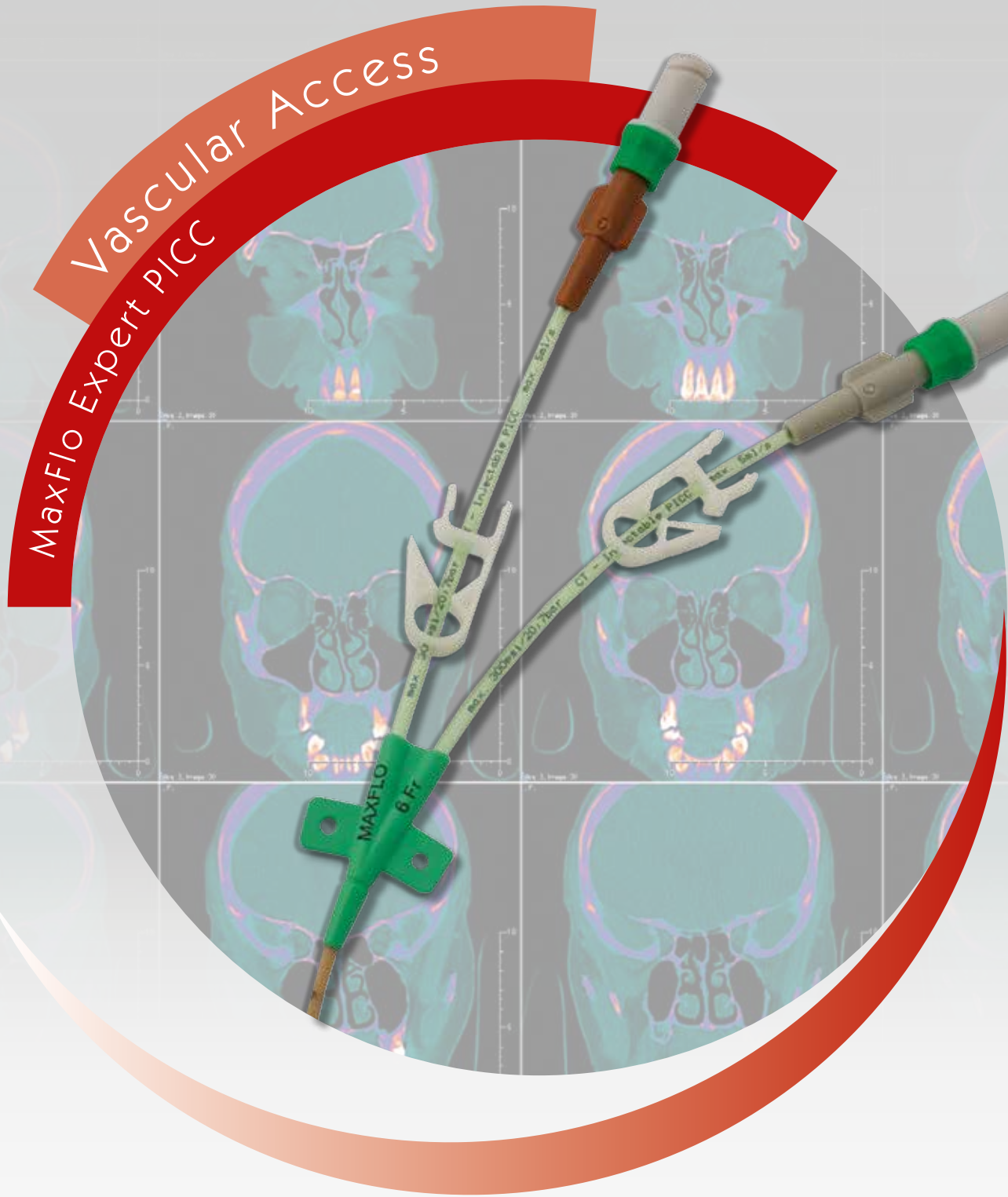




Value Life



# Introducing MaxFlo Expert PICC

For CT-rated injection

The only PICC you will need ensuring **best practice** and **optimum patient care** throughout IV therapy.

Unlike other power injectable catheters MaxFlo Expert PICC offers protection from the most common pathogens.

- Sharps safe echogenic-tipped introducer needle
- Choice of tapered or non-tapered
- Unique patented Agion® silver technology
- Pressure tested for power injection up to 300psi
- Maximum flow rate to power inject is 5ml/second\*.

\*Maximum for 4Fr is 4ml/second

## Integral extension line

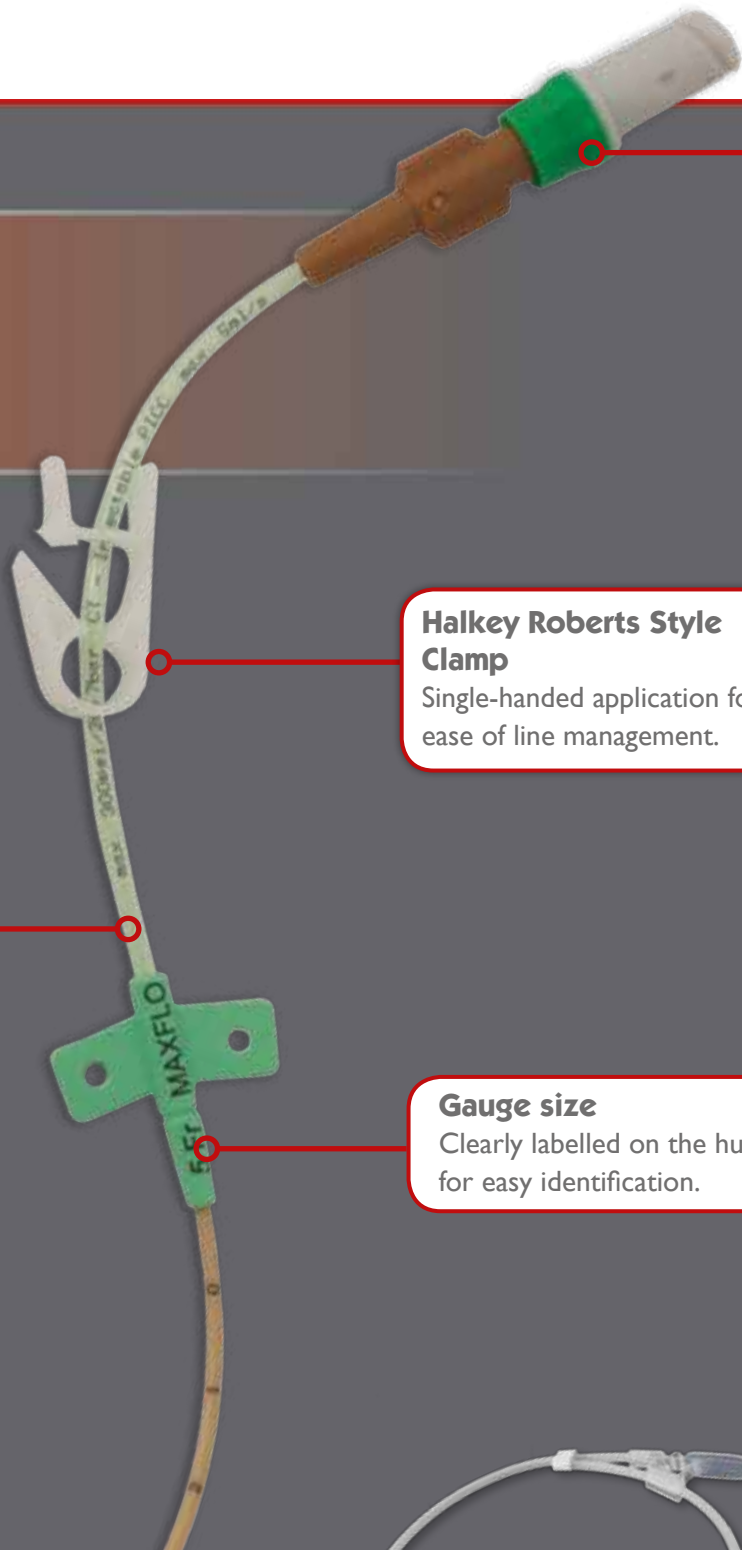
With permanent markings for easy identification after insertion, indicating max flow rate, psi and power injectable.

## Clearly labelled depth markings

Every 1cm along the catheter body for ease of insertion and accurate placement.

**MaxFlo Expert P**  
**is supplied with**

# MaxFlo Expert PICC



**Halkey Roberts Style Clamp**  
Single-handed application for ease of line management.

**Gauge size**  
Clearly labelled on the hub for easy identification.

**Bionector**  
The CT rated needle-free device for use during pressure injection maintaining a totally closed system. Bionector offers protection against needle-stick injury and microbial contamination.

**Grip-Lok™**  
A unique low-profile, soft securement device. Excellent for reducing catheter movement and migration.

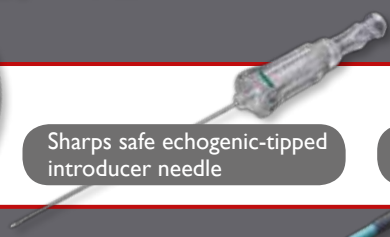


PICC

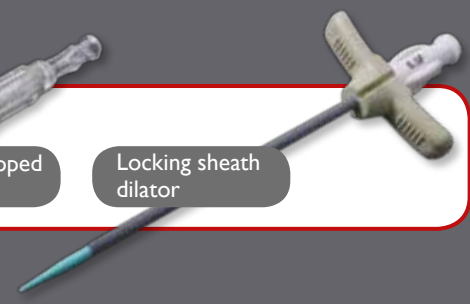
Anti-kink nitinol guidewire with thumb feeder



Sharps safe echogenic-tipped introducer needle



Locking sheath dilator



## Ordering Information

Vygon code	NHSSC code	Description	Size (Fr)	Catheter information			Flow rate gravity (ml/min)			CT max injection rate	Introducer needle		MST information		Unit of sale
				N° of lumen	OD (mm)	Length (cm)	1	2	3		Size (G)	Length (mm)	Size (Fr)	Length (mm)	
8394.14	FSU457	Tapered	4	1	1.35	55	19	-	-	4 ml/s 200psi	21	70	4.5	70	10
8394.15	FSU460	Non-tapered	5	1	1.67	55	28	-	-	5 ml/s 300psi	21	70	5.5	70	10
8394.16	FSU459	Non-tapered	6	1	2.0	55	64	-	-	5 ml/s 300psi	21	70	6.5	70	10
8394.25	FSU458	Tapered	5	2	1.67	55	9	9	-	5 ml/s 300psi	21	70	5.5	70	10
8394.206	-	Non-tapered	6	2	2.0	55	14	14	-	5 ml/s 300psi	21	70	6.5	70	10
8394.36	FSU462	Tapered	6	3	2.0	55	10	4	4	5 ml/s 300psi	21	70	6.5	70	10
580410	FSU463	MaxFlo Grip-Lok™	-	-	-	-	-	-	-	-	-	-	-	-	50



### Kit contents

- 1 x MaxFlo Expert PICC
- 1 x Nitinol guidewire with thumb feeder
- 1 x Locking sheath dilator
- 1 x Sharps safe echogenic-tipped needle
- 1 x MaxFlo Grip-Lok™
- 1 x Mini scalpel
- 1 x Bionector per lumen



www.carbonbalancedpaper.com  
CBP00031801403130140

This literature has been made using carbon balanced paper. If you would like to find out more about what Vygon (UK) Ltd does for the environment, please visit:

[www.vygon.co.uk/company/corporate](http://www.vygon.co.uk/company/corporate)

**For further information, please contact: [vygon@vygon.co.uk](mailto:vygon@vygon.co.uk)**

The specifications shown in this leaflet are for information only and are not, under any circumstances, of a contractual nature. This document is intended for use in the UK only.

Vygon (UK) Ltd • The Pierre Simonet Building • V Park • Gateway North  
• Latham Road • Swindon • Wiltshire • SN25 4DL

Tel: 01793 748800 • Fax: 01793 748899 • Twitter: @vygonuk

Web: [www.vygon.co.uk](http://www.vygon.co.uk)

Content correct 09/2014 Code: DXJB0039002



[www.vygon.co.uk](http://www.vygon.co.uk)